

STATE OF NORTH CAROLINA DEPARTMENT
OF TRANSPORTATION HIGHWAY DIVISION 6

PLANS

Let Date: January 7, 2026

CONTRACT ID: DF00544

TIP NO.: -----

FEDERAL AID NO.: STATE FUNDED

WBS ELEMENT NO.: 2026CPT.06.12.20092.1

ROUTE NO.: VARIOUS

LOCATION: VARIOUS

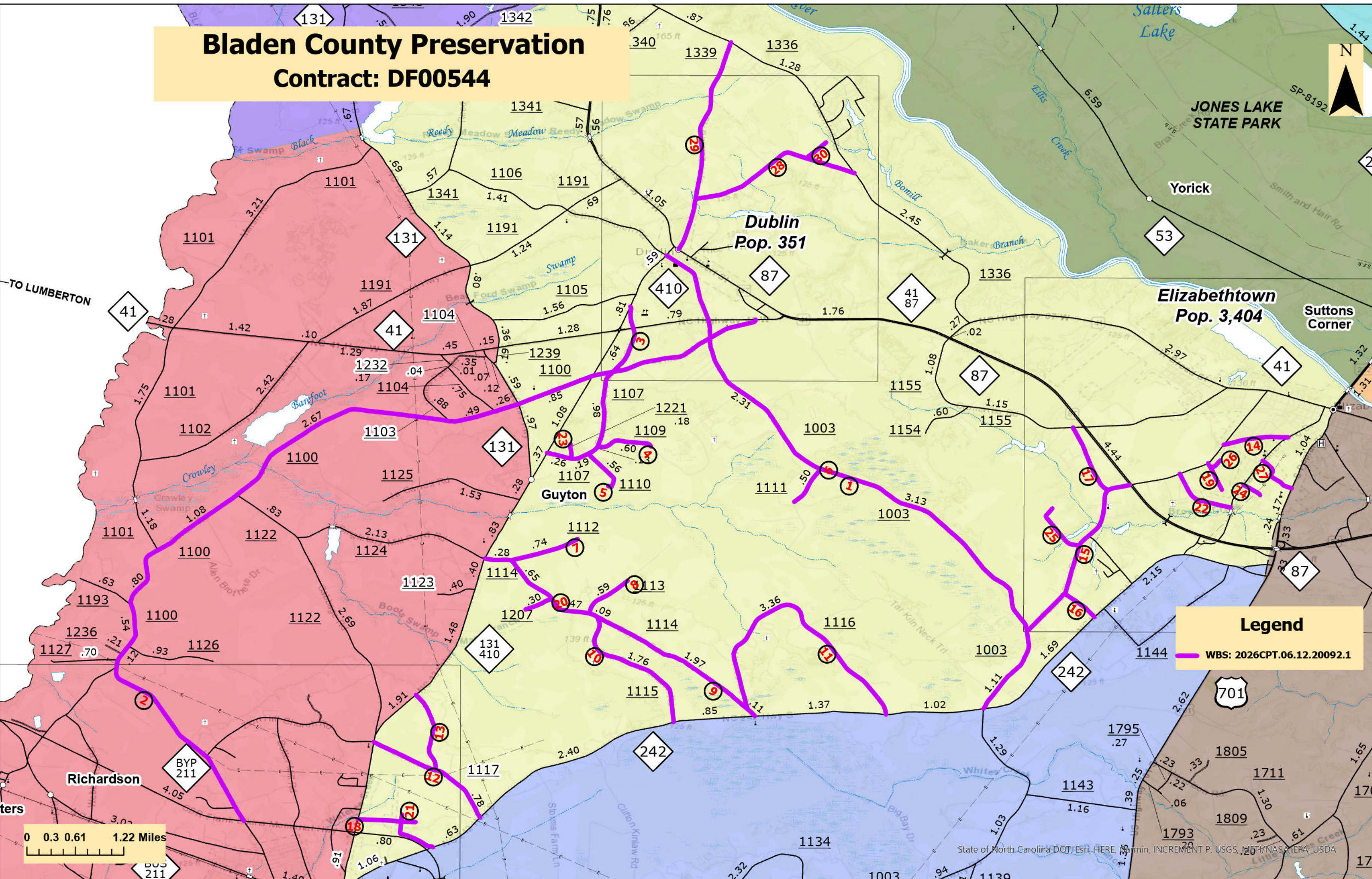
COUNTY: BLADEN

**TYPE OF WORK: ASPHALT SURFACE TREATMENT-DOUBLE SEALS, FOG SEAL & HOT POURED RUBBER
ASPHALT JOINT SEALER**

LENGTH OF PROJECT: 48.892 MILES

Bladen County Preservation

Contract: DF00544



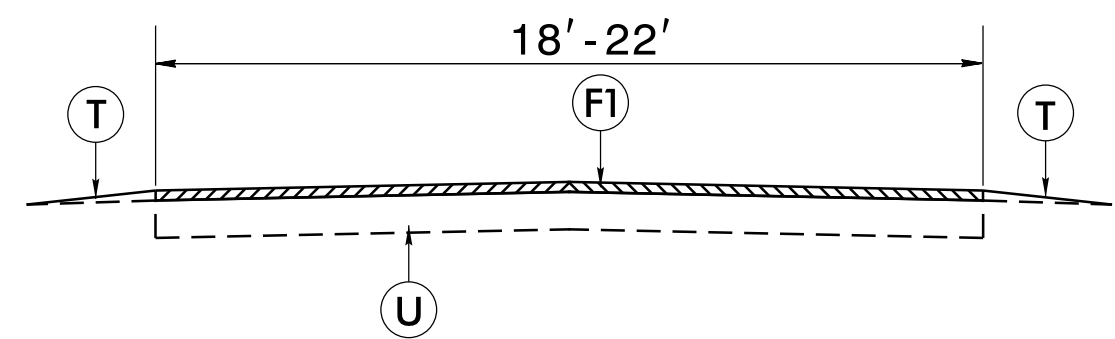
Legend

— WBS: 2026CPT.06.12.20092.1

0 0.3 0.61 1.22 Miles

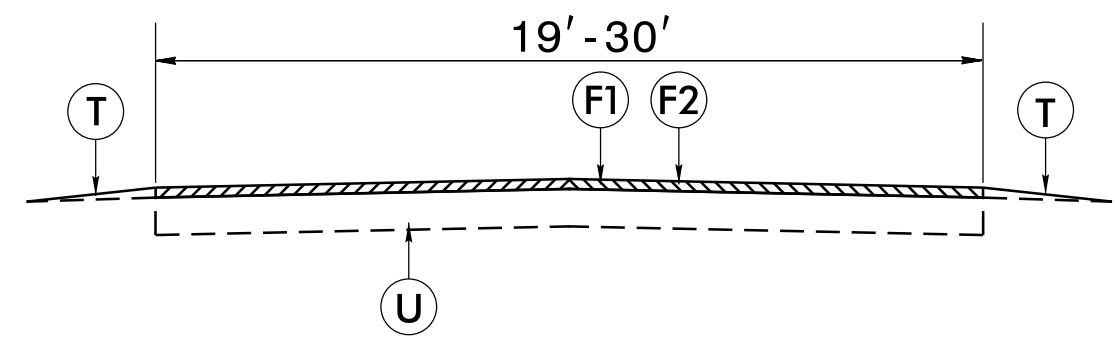
PAVEMENT SCHEDULE

F1	DOUBLE SEAL PLACED ACCORDING TO THE SPECIAL PROVISION
F2	FOG SEAL PLACED ACCORDING TO THE SPECIAL PROVISION
T	EXISTING SHOULDER
U	EXISTING ASPHALT PAVEMENT



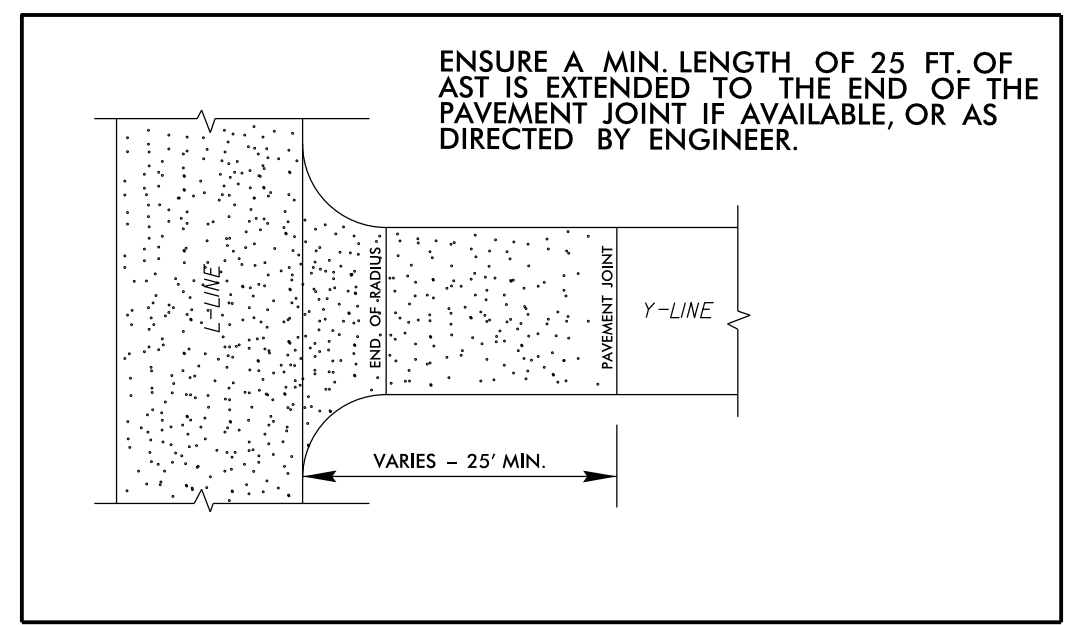
TYPICAL SECTION NO. 1

*PLUS HOT POURED RUBBER JOINT SEALER



TYPICAL SECTION NO. 2

*PLUS HOT POURED RUBBER JOINT SEALER
(MAPS 14, 19, 22, 24, 26 & 27)

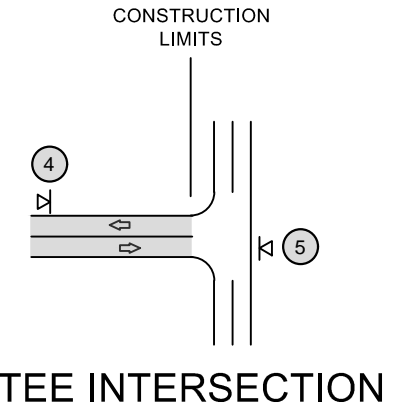
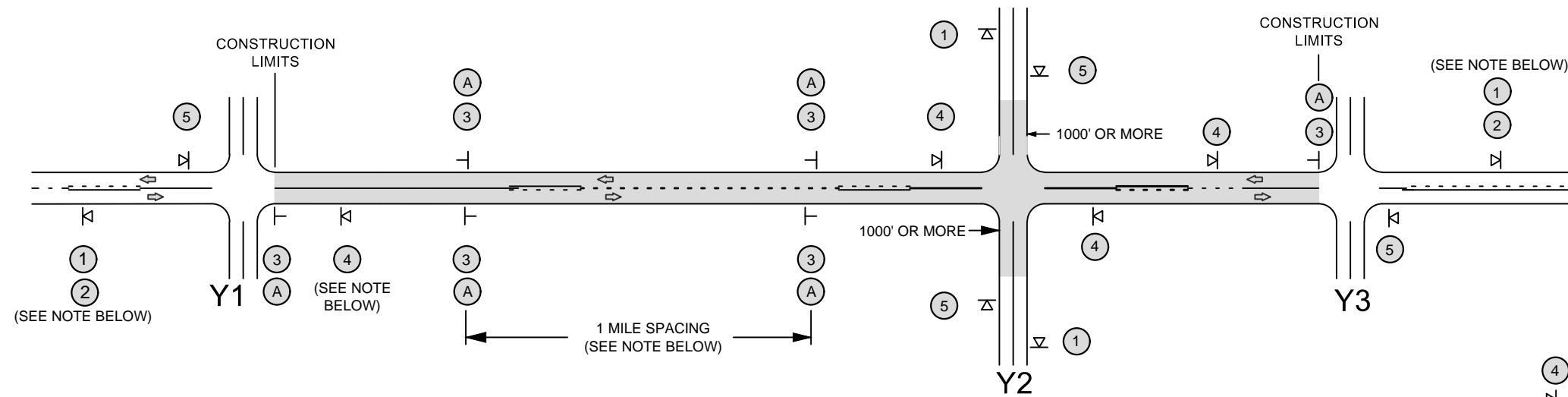


DETAIL 1

-Y- LINE INTERSECTION TREATMENT

SIGNING FOR ASPHALT SURFACE TREATMENT

LEGEND	
	PORTABLE SIGN
	STATIONARY SIGN
	DIRECTION OF TRAFFIC FLOW



MAINLINE (-L-) SIGNING

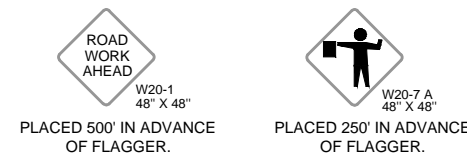
-Y- LINE SIGNING

SIGNING NOTES AND PLACEMENT PER DIRECTION	1		- PLACE 1000' PRIOR TO BEGINNING OF CONSTRUCTION LIMITS. ONLY USED ON -Y- LINES IF RESURFACING LIMITS EXTEND 1000' ALONG -Y- LINE.
	2		- SIGN #2 ONLY USED WHEN RESURFACING LIMITS ARE 2 OR MORE MILES IN LENGTH. ROUND UP TO THE NEAREST WHOLE NUMBER. DO NOT USE FRACTIONAL OR DECIMAL NUMBERS.
	3		- ALTERNATE THE FOLLOWING TWO SIGNS: - STARTING WITH "LOOSE GRAVEL" (W8-7) FOLLOWED BY "UNMARKED PAVEMENT". - PLACE INITIALLY AT THE CONSTRUCTION LIMITS AND SPACED 1 MILE APART THEREAFTER.
			- AT TEE INTERSECTIONS INSTALL INITIALLY 0.5 MILE FROM INTERSECTION AND SPACE 1 MILE APART THEREAFTER.
	A		PLACE INITIALLY AT THE CONSTRUCTION LIMITS AND SPACED 1 MILE APART THEREAFTER. IF NO -Y- LINES EXIST, PLACE 2ND SET 1/2 MILE FROM THE CONSTRUCTION LIMITS AND THEN SPACE 1 MILE THEREAFTER. SPEED LIMIT SIGN MAY BE PLACED ON SAME POST AS LOOSE GRAVEL SIGN, IF DESIRED.
	4		- THESE ARE FOR -Y- LINES THAT ARE "THROUGH" ROADWAYS. DEAD END AND SUBDIVISION ROADS ARE NOT "THROUGH" ROADWAYS. - INSTALL 500' +/- FROM EACH -Y- LINE APPROACH AS SHOWN ABOVE. - FOR MULTIPLE -Y- LINES THAT ARE SEPARATED BY 0.25 MILES OR LESS, TREAT AS A SINGLE UNIT AND INSTALL WITHIN 500' OF EACH APPROACH. - A MAXIMUM OF 2 SIGN SETS PER MILE. DO NOT INSTALL WHEN -Y- LINES ARE WITHIN 0.5 MILES FROM "END ROAD WORK" SIGN.
5		PLACE 500' FOLLOWING THE END OF CONSTRUCTION LIMITS OR AS SHOWN WHEN WORK ENDS AT A 3-WAY TEE INTERSECTION.	

STATIONARY SIGNING NOT REQUIRED FOR THE FOLLOWING -Y- LINE CONDITIONS:

- 1) LESS THAN 1000' OF RESURFACING ALONG -Y- LINE
- 2) SUBDIVISION ROADS
- 3) DEAD END ROADS

WHEN PAVING/CONSTRUCTION ACTIVITIES PROCEED ACROSS AN UNSIGNED -Y- LINE, PORTABLE ADVANCE WARNING SIGNS SHALL BE USED ALONG THE -Y- LINE AS SHOWN BELOW. REMOVE UPON COMPLETION OF WORK.



NOTE:
IT IS THE CONTRACTOR'S RESPONSIBILITY TO ENSURE THE PROPER PLACEMENT AND LOCATION OF WORK ZONE SIGNING PER THE STANDARD DRAWING. NCDOT HAS THE RIGHT TO INSPECT THE PLANNED LOCATIONS AND REQUIRE ADJUSTMENT BY THE CONTRACTOR, AS NEEDED, OR AS DIRECTED BY THE ENGINEER.

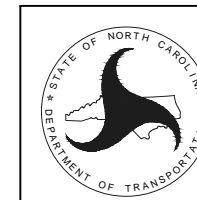
MAPS LESS THAN 2 MILES

FOR AST RESURFACING MAPS WITH CONSTRUCTION LIMITS LESS THAN 2 MILES IN LENGTH, USE A STATIONARY "LOOSE GRAVEL" SIGN AT THE BEGINNING CONSTRUCTION LIMIT FOLLOWED BY AN "UNMARKED PAVEMENT" SIGN MIDWAY THROUGH AND AN "END ROAD WORK" SIGN AT THE END CONSTRUCTION LIMIT.

REVISED - 12-13-2018

NCDOT - DIVISION 6

ADVANCE WARNING SIGNS FOR 2-LANE ROADWAY ASPHALT SURFACE TREATMENT



GUIDELINES FOR LANE WIDTHS ON RESURFACING PROJECTS

Contractor shall place the new pavement markings in accordance with this table and detail unless otherwise directed by the Engineer.

TWO LANE - TWO WAY ROADWAY - 55 MPH		
ROADWAY WIDTH	LANE WIDTH	SHOULDER WIDTH
18'	9' *	0'
20'	10' *	0'
22'	10'	1'
24'	10'	2'
26'	11'	2'
28'	12'	2'
32'	12'	4'

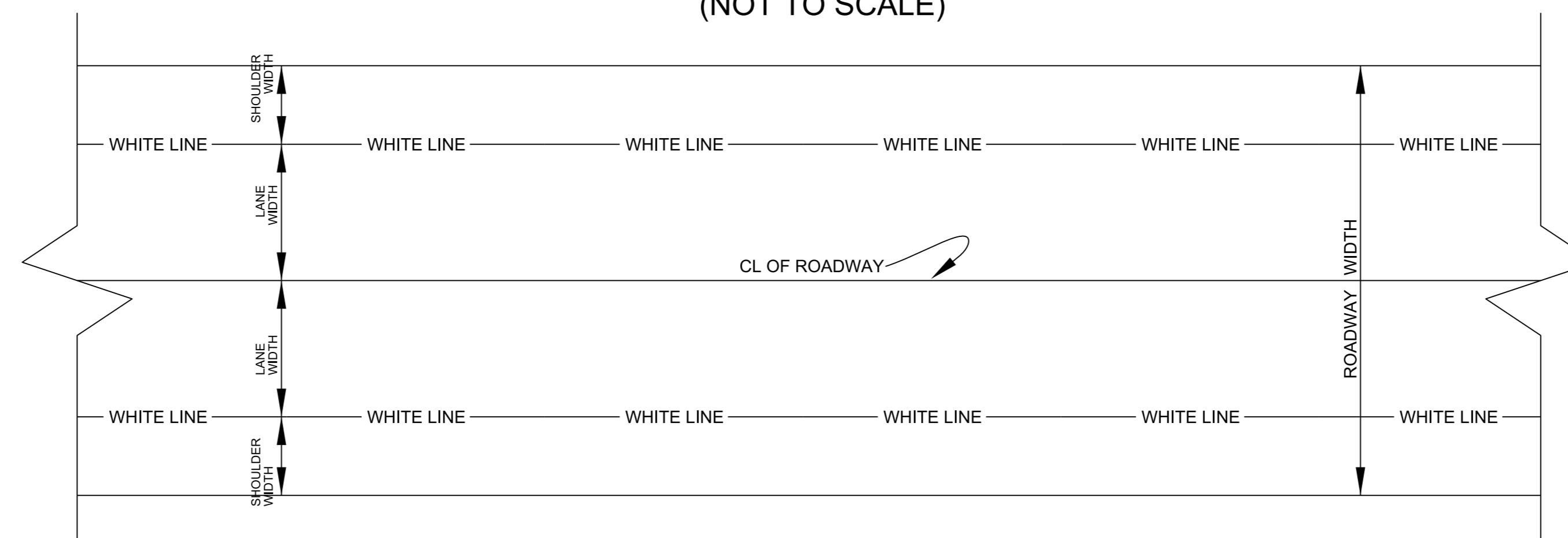
* May vary due to pavement width

TWO LANE - TWO WAY ROADWAY		50
MPH OR LESS		
ROADWAY WIDTH	LANE WIDTH	SHOULDER WIDTH
18'	9' *	0'
20'	10' *	0'
22'	10'	1'
24'	10'	2'
26'	11'	2'
28'	11'	3'
32'	11'	5'

* May vary due to pavement width

SCHEMATIC OF ROADWAY

(NOT TO SCALE)



PROJECT NO.	SHEET NO.	TOTAL NO.
2026CPT.06.12.20092.1	1	2

SUMMARY OF QUANTITIES

PROJECT NO	COUNTY	MAP NO	ROUTE	DESCRIPTION	TYP NO	LANES	LANE TYPE	LENGTH	WIDTH	BEGIN MP	END MP	1702000000-E SEAL EXISTING PAVEMENT CRACKS & JOINTS	1803500000-E ASPHALT SURFACE TREATMENT, DOUBLE SEAL	1820000000-E ASPHALT SURFACE TREATMENT, FOG SEAL	1838000000-E EMULSION FOR ASPHALT SURFACE TREATMENT
2026CPT.06.12.20092.1	Bladen	1	SR-1003 / TWISTED HICKORY RD	FROM NC 242 TO NC 410	1	2	2WU - Two-lane two-way undivided traffic	7.510	22	9.790	17.300	18,775	98,010		53,311
2026CPT.06.12.20092.1	Bladen	2	SR-1100 / CENTER RD	FROM NC 41 TO NC 131	1	2	2WU	11.290	21	0.000	11.290	28,225	143,331		80,144
2026CPT.06.12.20092.1	Bladen	3	SR-1107 / PLEASANT GROVE CHURCH RD	FROM NC 410 TO NC 410	1	2	2WU	2.441	20	0.000	2.441	6,103	29,318		15,753
2026CPT.06.12.20092.1	Bladen	4	SR-1109 / HESTER MILL RD	FROM SR 1107 TO CUL-DE-SAC	1	2	2WU	0.600	19	0.000	0.600	1,500	6,688		3,872
2026CPT.06.12.20092.1	Bladen	5	SR-1110 / CLAYTON PAIT RD	FROM SR 1107 TO CUL-DE-SAC	1	2	2WU	0.560	20	0.000	0.560	1,400	6,571		3,614
2026CPT.06.12.20092.1	Bladen	6	SR-1111 / RACE TRACK RD	FROM SR 1003 TO CUL-DE-SAC	1	2	2WU	0.500	20	0.000	0.500	1,250	5,867		3,388
2026CPT.06.12.20092.1	Bladen	7	SR-1112 / SASSAFRAS RD	FROM SR 1114 TO DEAD END	1	2	2WU	0.740	19	0.000	0.740	1,850	8,249		4,775
2026CPT.06.12.20092.1	Bladen	8	SR-1113 / CATFISH FARM RD	FROM SR 1114 TO DEAD END	1	2	2WU	0.590	19	0.000	0.590	1,475	6,577		3,807
2026CPT.06.12.20092.1	Bladen	9	SR-1114 / GUYTON RD	FROM NC 242 TO NC 131	1	2	2WU	3.570	21	0.000	3.570	8,925	46,447		23,038
2026CPT.06.12.20092.1	Bladen	10	SR-1115 / OAK GROVE CHURCH RD	FROM SR 1114 TO NC 242	1	2	2WU	1.760	21	0.000	1.760	4,400	21,683		11,358
2026CPT.06.12.20092.1	Bladen	11	SR-1116 / HORSESHOE RD	FROM SR 1114 TO SR 1114	1	2	2WU	3.360	20	0.000	3.360	8,400	39,424		21,683
2026CPT.06.12.20092.1	Bladen	12	SR-1117 / STORMS RD	FROM NC 242 TO NC 410	1	2	2WU	1.510	19	0.000	1.510	3,775	16,831		9,745
2026CPT.06.12.20092.1	Bladen	13	SR-1118 / MARSHALL CAIN RD	FROM NC 410 TO SR 1117	1	2	2WU	1.010	19	0.000	1.010	2,525	11,428		6,518
2026CPT.06.12.20092.1	Bladen	14	SR-1148 / QUAIL ST	FROM SR 1150 TO SR 1145	2	2	2WU	0.680	20	0.000	0.680	1,700	7,979	7,979	5,266
2026CPT.06.12.20092.1	Bladen	15	SR-1150 / OLD PEANUT RD/PEANUT PLANT RD	FROM NC 87 TO SR 1003	1	2	2WU	2.267	21	1.960	4.227	5,668	29,213		17,556
2026CPT.06.12.20092.1	Bladen	16	SR-1151 / OLD WESLEY CHAPEL RD	FROM SR 1150 TO NC 242	1	2	2WU	0.430	20	0.000	0.430	1,075	5,045		2,775
2026CPT.06.12.20092.1	Bladen	17	SR-1153 / SOUP HAIRE RD	FROM SR 1150 TO SR 1155	1	2	2WU	0.877	21	0.000	0.877	2,193	10,842		5,660
2026CPT.06.12.20092.1	Bladen	18	SR-1196 / INDUSTRIAL DR	FROM NC 131 TO DEAD END	1	2	2WU	0.603	20	0.000	0.603	1,508	7,300		3,891
2026CPT.06.12.20092.1	Bladen	19	SR-1200 / MOULTRIE LN	FROM SR 1150 TO DEAD END	2	2	2WU	0.360	19	0.000	0.360	900	4,185	4,185	2,788
2026CPT.06.12.20092.1	Bladen	20	SR-1207 / PAIT RD	FROM SR 1114 TO END PAVEMENT	1	2	2WU	0.300	20	0.000	0.300	750	3,520		1,936
2026CPT.06.12.20092.1	Bladen	21	SR-1209 / J R BRITT RD	FROM NC 242 TO END MAINT	1	2	2WU	0.620	20	0.000	0.620	1,550	7,275		4,001
2026CPT.06.12.20092.1	Bladen	22	SR-1212 / RICHARDSON ST	FROM SR 1150 TO SR 1145	2	2	2WU	0.740	30	0.000	0.740	1,850	13,304	13,304	9,169
2026CPT.06.12.20092.1	Bladen	23	SR-1221 / PARSONAGE RD	FROM SR 1107 TO DEAD END	1	2	2WU	0.180	19	0.000	0.180	450	2,007		1,045
2026CPT.06.12.20092.1	Bladen	24	SR-1224 / EMMA ST	FROM SR 1145 TO DEAD END	2	2	2WU	0.220	19	0.000	0.220	550	2,452	2,452	1,704
2026CPT.06.12.20092.1	Bladen	25	SR-1230 / JOHNSON RD	FROM SR 1150 TO CUL DE SAC	1	2	2WU	0.650	18	0.000	0.650	1,625	6,864		4,195
2026CPT.06.12.20092.1	Bladen	26	SR-1231 / M & M ST	FROM SR 1200 TO DEAD END	2	2	2WU	0.140	20	0.000	0.140	350	1,643	1,643	1,084
2026CPT.06.12.20092.1	Bladen	27	SR-1233 / NEWKIRK ST EXT	FROM SR 1145 TO US 701	2	2	2WU	0.504	20	0.000	0.504	1,260	5,914	5,914	3,902
2026CPT.06.12.20092.1	Bladen	28	SR-1338 / SUGGS TAYLOR RD	FROM SR 1339 TO SR 1336	1	2	2WU	1.900	19	0.000	1.900	4,750	22,408		11,648
2026CPT.06.12.20092.1	Bladen	29	SR-1339 / LYON LANDING RD/E 4TH ST	FROM SR 1336 TO NC 87	1	2	2WU	2.690	18	0.000	2.690	6,725	28,851		17,359
2026CPT.06.12.20092.1	Bladen	30	SR-1359 / J J BORDEAUX RD	FROM SR 1338 TO DEAD END	1	2	2WU	0.290	18	0.000	0.290	725	3,228		1,871
TOTAL FOR PROJ NO. 2026CPT.06.12.20092.1								48.892				122,232	602,454	35,477	336,856
GRAND TOTAL								48.892				122,232	602,454	35,477	336,856

PROJECT NO.	SHEET NO.	TOTAL NO.
2026CPT.06.12.20092.1	2	2

THERMOPLASTIC AND PAINT QUANTITIES

PROJECT NO	COUNTY	MAP NO	ROUTE	DESCRIPTION	TYP NO	LANES	LANE TYPE	LENGTH	WIDTH	BEGIN MP	END MP	4413000000-E	4457000000-N	4890000000-E	4890000000-E
												WORK ZONE ADVANCE/GENERAL WARNING SIGNING	TEMPORARY TRAFFIC CONTROL	HOT SPRAY THERMOPLASTIC PAVEMENT MARKING LINES 4", 50 MILS YELLOW	HOT SPRAY THERMOPLASTIC PAVEMENT MARKING LINES 4", 50 MILS WHITE
2026CPT.06.12.20092.1	Bladen	1	SR-1003 / TWISTED HICKORY RD	FROM NC 242 TO NC 410	1	2	2WU - Two-lane two-way undivided traffic	7.51	22	9.79	17.3	477	0.15	55,173	79,306
2026CPT.06.12.20092.1	Bladen	2	SR-1100 / CENTER RD	FROM NC 41 TO NC 131	1	2	2WU	11.29	21	0	11.29	688	0.23	73,395	120,668
2026CPT.06.12.20092.1	Bladen	3	SR-1107 / PLEASANT GROVE CHURCH RD	FROM NC 410 TO NC 410	1	2	2WU	2.441	20	0	2.441	193	0.05	19,423	25,766
2026CPT.06.12.20092.1	Bladen	4	SR-1109 / HESTER MILL RD	FROM SR 1107 TO CUL-DE-SAC	1	2	2WU	0.6	19	0	0.6	112	0.01		
2026CPT.06.12.20092.1	Bladen	5	SR-1110 / CLAYTON PAIT RD	FROM SR 1107 TO CUL-DE-SAC	1	2	2WU	0.56	20	0	0.56	112	0.01		
2026CPT.06.12.20092.1	Bladen	6	SR-1111 / RACE TRACK RD	FROM SR 1003 TO CUL-DE-SAC	1	2	2WU	0.5	20	0	0.5	112	0.01		
2026CPT.06.12.20092.1	Bladen	7	SR-1112 / SASSAFRAS RD	FROM SR 1114 TO DEAD END	1	2	2WU	0.74	19	0	0.74	112	0.01		
2026CPT.06.12.20092.1	Bladen	8	SR-1113 / CATFISH FARM RD	FROM SR 1114 TO DEAD END	1	2	2WU	0.59	19	0	0.59	112	0.01	3,068	6,230
2026CPT.06.12.20092.1	Bladen	9	SR-1114 / GUYTON RD	FROM NC 242 TO NC 131	1	2	2WU	3.57	21	0	3.57	256	0.07	25,314	38,300
2026CPT.06.12.20092.1	Bladen	10	SR-1115 / OAK GROVE CHURCH RD	FROM SR 1114 TO NC 242	1	2	2WU	1.76	21	0	1.76	112	0.04	15,081	18,586
2026CPT.06.12.20092.1	Bladen	11	SR-1116 / HORSESHOE RD	FROM SR 1114 TO SR 1114	1	2	2WU	3.36	20	0	3.36	244	0.07	28,280	35,482
2026CPT.06.12.20092.1	Bladen	12	SR-1117 / STORMS RD	FROM NC 242 TO NC 410	1	2	2WU	1.51	19	0	1.51	112	0.03	9,379	15,946
2026CPT.06.12.20092.1	Bladen	13	SR-1118 / MARSHALL CAIN RD	FROM NC 410 TO SR 1117	1	2	2WU	1.01	19	0	1.01	112	0.02	8,865	10,667
2026CPT.06.12.20092.1	Bladen	14	SR-1148 / QUAIL ST	FROM SR 1150 TO SR 1145	2	2	2WU	0.68	20	0	0.68	112	0.01	6,568	7,181
2026CPT.06.12.20092.1	Bladen	15	SR-1150 / OLD PEANUT RD/PEANUT PLANT RD	FROM NC 87 TO SR 1003	1	2	2WU	2.267	21	1.96	4.227	183	0.05	14,525	24,451
2026CPT.06.12.20092.1	Bladen	16	SR-1151 / OLD WESLEY CHAPEL RD	FROM SR 1150 TO NC 242	1	2	2WU	0.43	20	0	0.43	112	0.01	2,947	4,541
2026CPT.06.12.20092.1	Bladen	17	SR-1153 / SOUP HAIRE RD	FROM SR 1150 TO SR 1155	1	2	2WU	0.877	21	0	0.877	112	0.02	4,874	9,293
2026CPT.06.12.20092.1	Bladen	18	SR-1196 / INDUSTRIAL DR	FROM NC 131 TO DEAD END	1	2	2WU	0.603	20	0	0.603	112	0.01	4,600	6,336
2026CPT.06.12.20092.1	Bladen	19	SR-1200 / MOULTRIE LN	FROM SR 1150 TO DEAD END	2	2	2WU	0.36	19	0	0.36	112	0.01		
2026CPT.06.12.20092.1	Bladen	20	SR-1207 / PAIT RD	FROM SR 1114 TO END PAVEMENT	1	2	2WU	0.3	20	0	0.3	112	0.01		
2026CPT.06.12.20092.1	Bladen	21	SR-1209 / J R BRITT RD	FROM NC 242 TO END MAINT	1	2	2WU	0.62	20	0	0.62	112	0.01	5,736	6,548
2026CPT.06.12.20092.1	Bladen	22	SR-1212 / RICHARDSON ST	FROM SR 1150 TO SR 1145	2	2	2WU	0.74	30	0	0.74	112	0.01	7,676	7,815
2026CPT.06.12.20092.1	Bladen	23	SR-1221 / PARSONAGE RD	FROM SR 1107 TO DEAD END	1	2	2WU	0.18	19	0	0.18	112	0.01		
2026CPT.06.12.20092.1	Bladen	24	SR-1224 / EMMA ST	FROM SR 1145 TO DEAD END	2	2	2WU	0.22	19	0	0.22	112	0.01		
2026CPT.06.12.20092.1	Bladen	25	SR-1230 / JOHNSON RD	FROM SR 1150 TO CUL DE SAC	1	2	2WU	0.65	18	0	0.65	112	0.01		
2026CPT.06.12.20092.1	Bladen	26	SR-1231 / M & M ST	FROM SR 1200 TO DEAD END	2	2	2WU	0.14	20	0	0.14	112	0.01		
2026CPT.06.12.20092.1	Bladen	27	SR-1233 / NEWKIRK ST EXT	FROM SR 1145 TO US 701	2	2	2WU	0.504	20	0	0.504	112	0.01	5,323	5,323
2026CPT.06.12.20092.1	Bladen	28	SR-1338 / SUGGS TAYLOR RD	FROM SR 1339 TO SR 1336	1	2	2WU	1.9	19	0	1.9	112	0.04	14,141	20,064
2026CPT.06.12.20092.1	Bladen	29	SR-1339 / LYON LANDING RD/E 4TH ST	FROM SR 1336 TO NC 87	1	2	2WU	2.69	18	0	2.69	207	0.05	22,649	28,407
2026CPT.06.12.20092.1	Bladen	30	SR-1359 / J J BORDEAUX RD	FROM SR 1338 TO DEAD END	1	2	2WU	0.29	18	0	0.29	112	0.01		
TOTAL FOR PROJ NO. 2026CPT.06.12.20092.1								48.892				4,824	1.00	327,017	470,910
GRAND TOTAL								48.892				4,824	1.00	327,017	470,910